



JUNIOR TOP BEAM CLAMP

NEFCO FIG #N92

411 BURNHAM ST.
 P.O. BOX 280186
 EAST HARTFORD, CT 06108
 TEL (860) 289-0285 FAX (860) 282-1487
 TOLL FREE 1-800-969-0285

EMPIRE INDUSTRIES, INC. FIG. #62
 ERICO FIG. # 300
 TOLCO FIG. # 65

MATERIAL: DUCTILE IRON WITH HARDENED STEEL SET SCREW.

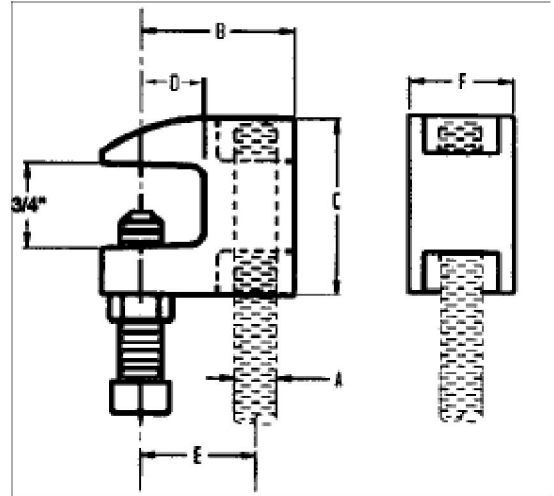
FINISH: PLAIN ELECTRO-GALVANIZED HOT DIPPED GALVANIZED

SERVICE: DESIGNED TO ATTACH HANGER ROD TO THE TOP FLANGE OF A BEAM OR BAR JOIST WHERE FLANGE THICKNESS DOES NOT EXCEED 5/8 OF AN INCH.

APPROVALS: U.L. - U.L.C. LISTED AND FM APPROVED. COMPLIES WITH FEDERAL SPECIFICATION A-A-1192 A (TYPE# 19) AND MANUFACTURERS' STANDARDIZATION SOCIETY MSS SP-58 AND SP-69 (TYPE# 19).

ORDERING: SPECIFY ROD SIZE, MATERIAL, FIGURE NUMBER AND FINISH.

NOTES: SEE MSS SP-69 FOR PROPER SET SCREW RECOMMENDATIONS. STAINLESS STEEL BEAM CLAMPS ARE RECOMMENDED FOR CORROSIVE ENVIRONMENTS.



ROD SIZE A	SET SCREW	B	C	D	E	F	MAX PIPE SIZE	MAX REC LOAD (LBS)	WGT EACH (LBS)
3/8-16	3/8-16	1 5/16	1 1/2	1/2	1	7/8	4	350	0.320
1/2-13	3/8-16	1 5/16	1 1/2	1/2	1	7/8	4	470	0.320
5/8-11	3/8-16	1 3/4	1 3/4	5/8	1 3/8	1 1/8	5	550	0.580
3/4-10	3/8-16	1 7/8	1 7/8	5/8	1 3/8	1 3/8	6	700	0.820
7/8-9	1/2-13	2 3/8	1 7/8	5/8	1 3/8	1 3/8	8	1000	0.795

SUBMITTAL INFORMATION

CUSTOMER:		APPROVAL STAMP	
PROJECT NAME:			
PROJECT NUMBER:	SECTION:		
PARAGRAPH:	OTHER:		

REV: A

2008