



# MALLEABLE BEAM CLAMP WITHOUT EXTENSION PIECE

## NEFCO FIG #N218

EMPIRE INDUSTRIES, INC. FIG. #218  
ERICO FIG. #360  
TOLCO FIG. #329

411 BURNHAM ST.  
P.O. BOX 280186  
EAST HARTFORD, CT 06108  
TEL (860) 289-0285 FAX (860) 282-1487  
TOLL FREE 1-800-969-0285

**MATERIAL:** MALLEABLE IRON JAW; STEEL TIE ROD, NUTS AND WASHER.

**FINISH:** BLACK GALVANIZED HOT DIPPED GALVANIZED

**SERVICE:** RECOMMENDED FOR ATTACHMENT TO STRUCTURAL STEEL. USE IN CONJUNCTION WITH AMERICAN STANDARD I-BEAMS AND WIDE FLANGE BEAMS WHERE BEAM WIDTHS ARE FROM 2 3/8 INCHES MINIMUM TO 7 INCHES MAXIMUM AND FLANGE THICKNESS DOES NOT EXCEED .60 INCH.

**APPROVALS:** UNDERWRITERS LABORATORIES LISTED AND FACTORY MUTUAL APPROVED FOR 3/4 THROUGH 8 INCH PIPE WHEN USED WITH EXTENSION PIECE. COMPLIES WITH FEDERAL SPECIFICATION WW-H-171E (TYPE 30) AND MANUFACTURERS STANDARDIZATION SOCIETY SP-69 (TYPE 30).

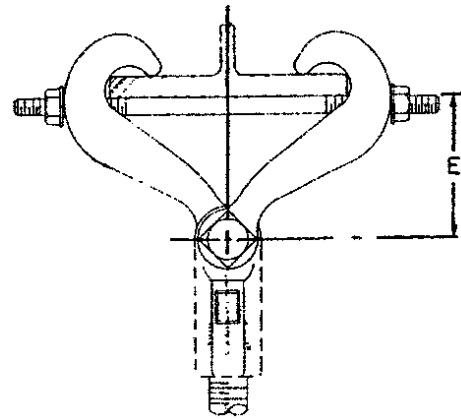
**INSTALLATION:** THE MALLEABLE BEAM CLAMP MAY BE USED WITH AN EYE ROD OR EXTENSION PIECE.

**FEATURES:**

- FUNCTIONAL DESIGN INSURES PROPER FIT FOR ALL BEAM SIZES.
- TIE ROD LOCKS CLAMP IN PLACE WHEN NUTS ARE TIGHTENED.
- ORDERING AND STOCKING SIMPLIFIED BECAUSE OF ONE UNIVERSAL SIZE.
- DESIGN ALLOWS HANGER ROD TO SWING FROM VERTICAL PROVIDING FLEXIBILITY AT THE BEAM CLAMP.

**LOADS • WEIGHTS • DIMENSIONS (INCHES)**

MAX ROD SIZE	MAXIMUM RECOMMENDED LOAD, LBS	WEIGHT (APPROX) LBS EACH	ROD TAKE-OUT, E OR E'						BOLT DIAMETER
			FOR WIDTH OF BEAM FLANGE						
			2 3/8	3	4	5	6	7	
7/8	1365	2.2	3 1/2	3 7/16	3 5/16	2 15/16	2 9/16	1 7/8	7/16



SUBMITTAL INFORMATION		
CUSTOMER:	APPROVAL STAMP	
PROJECT NAME:		
PROJECT NUMBER:		SECTION:
PARAGRAPH:		OTHER:

REV: A

2008