



411 BURNHAM ST.  
 P.O. BOX 280186  
 EAST HARTFORD, CT 06108  
 TEL (860) 289-0285 FAX (860) 282-1487  
 TOLL FREE 1-800-969-0285

# V BOTTOM CLEVIS HANGER

EMPIRE INDUSTRIES, INC. FIG. #11V  
 ERICO FIG. #104V  
 TOLCO FIG. #1V

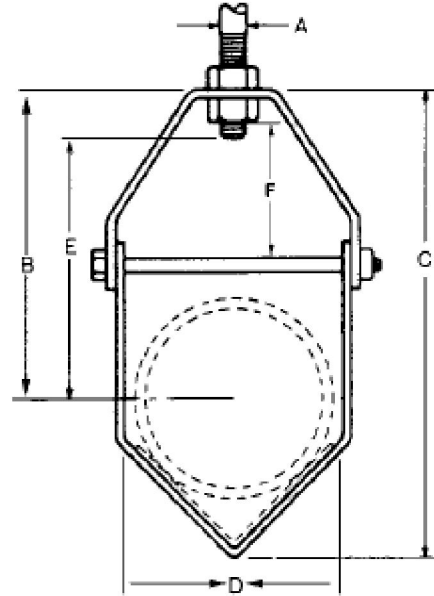
**MATERIAL:** CARBON STEEL

**FINISH:**  PLAIN  ELECTRO-GALVANIZED

**SERVICE :** DESIGNED FOR THE SUSPENSION OF FLEXIBLE PLASTIC PIPE LINES. USED IN CONJUNCTION WITH FIGURE #12 CHANNEL.

**ORDERING:** SPECIFY SIZE NUMBER AND FIGURE NUMBER.

**NOTES:** HANGER AND CHANNEL SOLD SEPARATELY. UPPER LOCKNUT MUST BE TIGHTENED SECURELY TO ASSURE PROPER HANGER PERFORMANCE.



“E” dimension includes exposed rod threads beyond bottom of the hex nut. Exposed rod thread dimension is equal to the diameter of the rod used.

PIPE SIZE	SIZE NUMBER	MATERIAL SIZE		BOLT	A	B	C	D	E	F	WGT EACH (LBS)	MAX REC LOAD (LBS)
		TOP	BOTTOM									
1/2	1	14ga x 7/8	16ga x 7/8	1/4	3/8	5 3/16	5 7/8	2 9/16	4 7/16	1 1/4	.30	150
3/4	1	14ga x 7/8	16ga x 7/8	1/4	3/8	5	5 7/8	2 9/16	4 1/4	1 1/4	.30	150
1	1	14ga x 7/8	16ga x 7/8	1/4	3/8	4 7/8	5 7/8	2 9/16	4 1/16	1 1/4	.30	150
1 1/4	1	14ga x 7/8	16ga x 7/8	1/4	3/8	4 5/8	5 7/8	2 9/16	3 7/8	1 1/4	.30	150
1 1/2	1	14ga x 7/8	16ga x 7/8	1/4	3/8	4 7/16	5 7/8	2 9/16	3 11/16	1 1/4	.30	150
2	1	14ga x 7/8	16ga x 7/8	1/4	3/8	4 1/8	5 7/8	2 9/16	3 3/8	1 1/4	.30	150
2 1/2	2	11ga x 1 3/16	14ga x 1 3/16	3/8	1/2	6 13/16	8 15/16	4 11/16	5 3/4	2 3/8	.96	250
3	2	11ga x 1 3/16	14ga x 1 3/16	3/8	1/2	6 3/8	8 15/16	4 11/16	5 5/16	2 3/8	.96	250
4	2	11ga x 1 3/16	14ga x 1 3/16	3/8	1/2	5 11/16	8 15/16	4 11/16	4 1/2	2 3/8	.96	250

### SUBMITTAL INFORMATION

CUSTOMER:		APPROVAL STAMP	
PROJECT NAME:			
PROJECT NUMBER:	SECTION:		
PARAGRAPH:	OTHER:		

REV: A

2008