



VIBRATION SPRING-FLEX AND NEOPRENE HANGER "RSH" SERIES

411 BURNHAM ST.
P.O. BOX 280186
EAST HARTFORD, CT 06108
TEL (860) 289-0285 FAX (860) 282-1487
TOLL FREE 1-800-969-0285

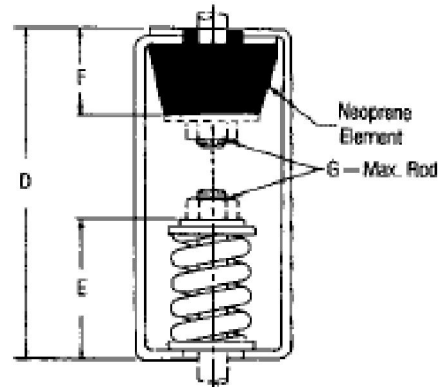
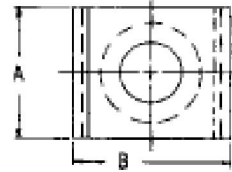
EMPIRE INDUSTRIES, INC. FIG. #36

MATERIAL: CARBON STEEL HOUSING AND SPRING WITH NEOPRENE RUBBER ELEMENT.

FINISH: PAINTED STEEL HOUSING AND SPRING WITH COLR CODED NEOPRENE.

SERVICE: DESIGNED TO ISOLATE BOTH NOISE AND VIBRATION FOR PIPING OR SUSPENDED EQUIPMENT.

ORDERING: SPECIFY TYPE, PIPE SIZE, ROD SIZE AND LOAD.



TYPE & SIZE	DEFLECTION		MAX LOAD		SPRING CONSTR.		SPRING COLOR
	in	(mm)	lbs	(kg)	lbs/in	(kg/mm)	
RSHS-6	1.5	(38.1)	21	(9.5)	16	(0.2)	BLUE
RSHS-7	1.5	(38.1)	39	(17.7)	30	(0.5)	BLACK
RSHS-8	1.3	(33.0)	50	(22.7)	46	(0.8)	RED
RSHS-9	1.2	(30.4)	80	(36.3)	80	(1.4)	GREEN
RSHS-10	1.2	(30.4)	105	(47.6)	105	(1.8)	GRAY
RSHS-11	1.5	(38.1)	60	(27.2)	46	(0.8)	BLUE
RSHS-12	1.5	(38.1)	100	(45.4)	78	(1.4)	ORANGE
RSHS-13	1.4	(35.5)	165	(74.9)	133	(2.3)	BROWN
RSHS-14	1.2	(30.4)	260	(118.0)	263	(4.7)	BLACK
RSHS-16	1.1	(27.9)	370	(167.9)	493	(8.8)	YELLOW
RSHS-17	0.7	(17.7)	450	(204.3)	900	(16.1)	RED
RSHS-18	0.7	(17.7)	700	(317.8)	1556	(27.8)	GREEN
RSH-19	1.6	(40.6)	85	(38.5)	62.5	(1.1)	PINK
RSH-21	1.5	(38.1)	115	(52.2)	87	(1.5)	BLACK
RSH-22	1.5	(38.1)	170	(77.1)	133	(2.3)	BLUE
RSH-23	1.5	(38.1)	225	(102.1)	179	(3.2)	YELLOW
RSH-24	1.4	(35.5)	325	(147.5)	264	(4.7)	BROWN
RSH-25	1.4	(35.5)	450	(204.3)	368	(6.5)	RED
RSH-26	1.4	(35.5)	600	(272.4)	513	(9.1)	PURPLE
RSH-27	1.3	(33.0)	750	(340.5)	707	(12.6)	ORANGE
RSH-28	1.2	(30.4)	900	(408.6)	881	(15.7)	GREEN
RSH-31	1.0	(25.4)	1100	(499.4)	1327	(23.7)	GRAY
RSH-32	0.9	(22.8)	1300	(590.2)	1758	(31.4)	WHITE
RSHW-200	1.5	(38.1)	125	(56.7)	100	(1.7)	BLUE
RSHW-400	1.5	(38.1)	400	(181.6)	303	(5.4)	BLACK
RSHW-600	1.3	(33.0)	700	(317.8)	620	(11.0)	RED
RSHW-1000	1.3	(33.0)	1060	(481.2)	952	(17.0)	GREEN
RSHW-1300	1.2	(30.4)	1300	(590.2)	1300	(23.2)	YELLOW
RSHW-1600	1.2	(30.4)	1600	(726.4)	1600	(28.6)	GRAY
RSHW-1625	1.2	(30.4)	2050	(930.7)	1968	(35.2)	GRAY/RED
RSHW-1628	1.2	(30.4)	2500	(1135.0)	2481	(44.3)	GRAY/GREEN
RSHW-2-1600	1.2	(30.4)	3200	(1451.5)	3200	(47.6)	GRAY
RSHW-2-1625	1.2	(30.4)	4100	(1859.7)	3936	(58.7)	GRAY/RED
RSHW-2-1628	1.2	(30.4)	5000	(2268.0)	4962	(73.8)	GRAY/GREEN

DIMENSIONS: INCHES (mm)						
TYPE & SIZE	A	B	D	E	F	G
RSHS-6 thru 10	2 1/4 (57.0)	2 3/4 (69.8)	5 1/2 (133.3)	2 7/8 (73.0)	15/16 (23.8)	3/8 (9.5)
RSHS-11 thru 18	3 (76.2)	3 1/4 (95.2)	7 (177.8)	3 (76.2)	1 1/2 (38.0)	5/8 (15.8)
RSH-19 thru 32	3 (76.2)	3 3/4 (95.2)	8 1/4 (209.5)	4 3/8 (111.0)	2 1/8 (53.6)	3/4 (19.0)
RSHW-200 thru 1000	4 1/2 (114.3)	5 (127.0)	10 3/16 (260.0)	4 5/8 (117.4)	2 1/8 (53.9)	1 (25.4)
RSHW-1300 thru 1628	4 1/2 (114.3)	5 (127.0)	10 3/16 (260.0)	4 5/8 (117.4)	2 1/8 (53.9)	1 (25.4)
RSHW-2-1600 thru 1628	5 (127.0)	11 (279.4)	16 (406.4)	6 1/2 (165.0)	4 (101.6)	1 1/8 (28.5)

SUBMITTAL INFORMATION

CUSTOMER:		APPROVAL STAMP	
PROJECT NAME:			
PROJECT NUMBER:	SECTION:		
PARAGRAPH:	OTHER:		